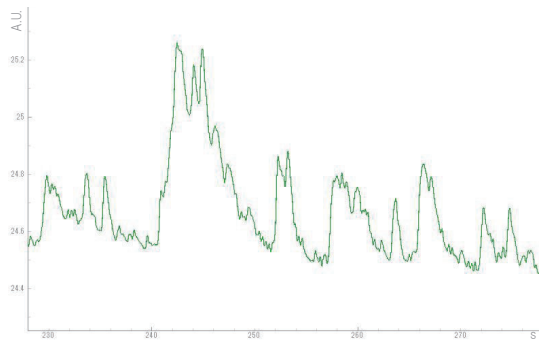


TeleFipho

Wireless Fiberphotometry

Fiber photometry is a powerful technique to detect calcium signal from specific neuron in awake animals using calcium indicator protein represented by GCaMP. In freely moving condition, the long optic fiber attached to the head of the animal can interfere with experimental setup, therefore can be a limitation factor of your project.

Our innovative new product, TeleFipho, includes all required components for fiber photometry - optic fiber, filter cube, light source, photo detector - and also wireless transmission circuit, in the very small 3g body. TeleFipho definitely will not block free behavior of your animals, enabling novel experimental approach using fiber photometry.



GCaMP signal from dorsal striatum in freely moving mouse. Provided by Dr. Keitaro Yoshida in Kenji Tanaka Lab, Keio University. You can see the movie on our website: www.teleopto.com



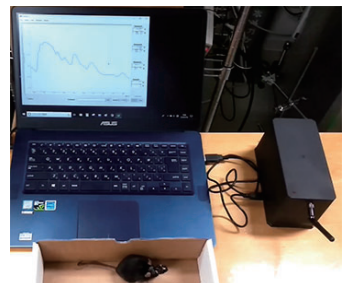
Transmitter Headstage



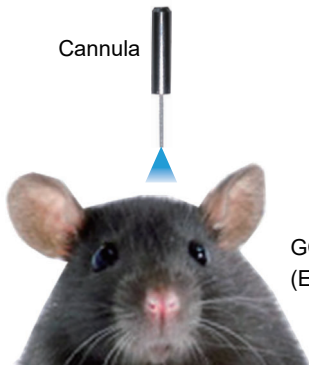
Wireless



Receiver



Simple setup - headstage, receiver and software



Cannula

GCaMP Mouse
(Ex: Blue / Em: Green)



Small headstage, suitable for mice

○ Features

- ✘ World first commercial wireless fiber photometry
- ✘ Small headstage / good for mice, rats, marmosets, etc.
- ✘ Standard 2.5mm ferrule cannula
- ✘ Rechargeable by a dedicated charger
- ✘ Adjustable excitation LED power
- ✘ Adjustable signal offset
- ✘ For GCaMP or GFP-like indicators

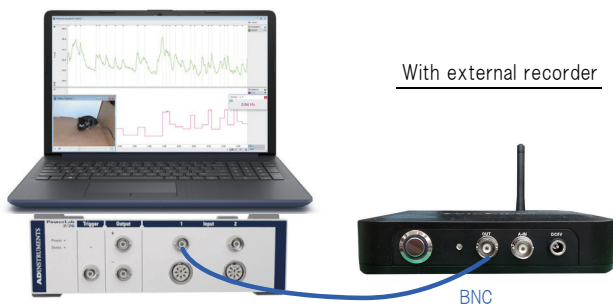
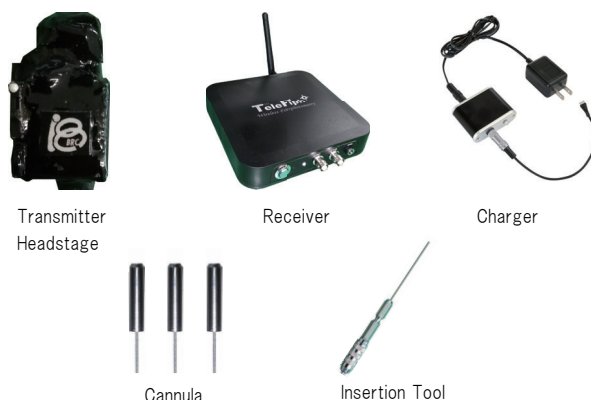
Specification	
Headstage weight	3g
Headstage size	12 x 12 x 22 mm
Excitation wavelength	LED peak 470nm, Filter band 445~490nm
Emission wavelength	Filter band 500~550nm
Excitation power	10~300μW@Fiber end (Adjustable)
Sampling rate	100Hz
AD resolution	16bit
Photo sensor	Photo diode
Gain	10 ¹⁰ V/A
Battery life	2hours@Excitation power 30μW
Transmission band	2.4GHz
Transmission distance	2m
Power	Battery powered, rechargeable
Receiver I/O	1x Photometry analog out, 1x General purpose analog In (0~5V)
PC Interface	USB / TeleFipho software (for Windows10)
Cannula	core: 400μm/NA0.39, Cladding: 425μm, Ferrule: 2.5mm

○ TeleFipho Standard Set

TeleFipho Standard Set consists of the following items :

- TeleFIT 1x TeleFipho Transmitter Headstage
- TeleFIR 1x TeleFipho Receiver
- TeleFiCharger 1x TeleFipho Charger
- TeleFiC_x (※) 3x TeleFipho Cannula
- TeleFITool 1x Insertion Tool for TeleFipho
- 1x TeleFipho software installer

(※) Please specify cannula length. 5mm cannula will come without specifying.
e.g. Cannula length 3.5mm: TeleFic_3.5 (in mm, resolution 0.1mm)



○ Stand alone / External recorder

TeleFipho receiver can be directly connected to PC via USB for fiber photometry data recording in TeleFipho software. TeleFipho software is good enough for simple raw data / low pass filtered data recording. Data can be directly read from Matlab / Octave, or can be exported to ASCII format.

For more complicated online analysis and / or parallel recording of other physiological data, you can access photometry data as analog signal via BNC on the front panel of TeleFipho receiver so that you can connect external data recording system (e.g. PowerLab from ADI).

Model	Description
TeleFipho-set	TeleFipho Standard Set
TeleFIT	TeleFipho Transmitter Headstage
TeleFIR	TeleFipho Receiver
TeleFiCharger	TeleFipho Charger
TeleFiC_x	TeleFipho Cannula
TeleFITool	Insertion Tool for TeleFipho

In US & Canada:

AMUZA INC

10060 Carroll Canyon Road, Suite 100, San Diego, California, USA, 92131

URL: <https://amuzainc.com>

Tel: (858) 225-6869

Fax: (858) 560-8040

Other Countries:



Teleopto / Bio Research Center

Towa-Takaoka Bldg. 4F, 2-28-24 Izumi, Higashi-ku, Nagoya, Japan 461-0001

URL: <http://www.teleopto.com>

Tel: +81-52-932-6421

Mail: sales-intl@brck.co.jp

Fax: +81-52-932-6755